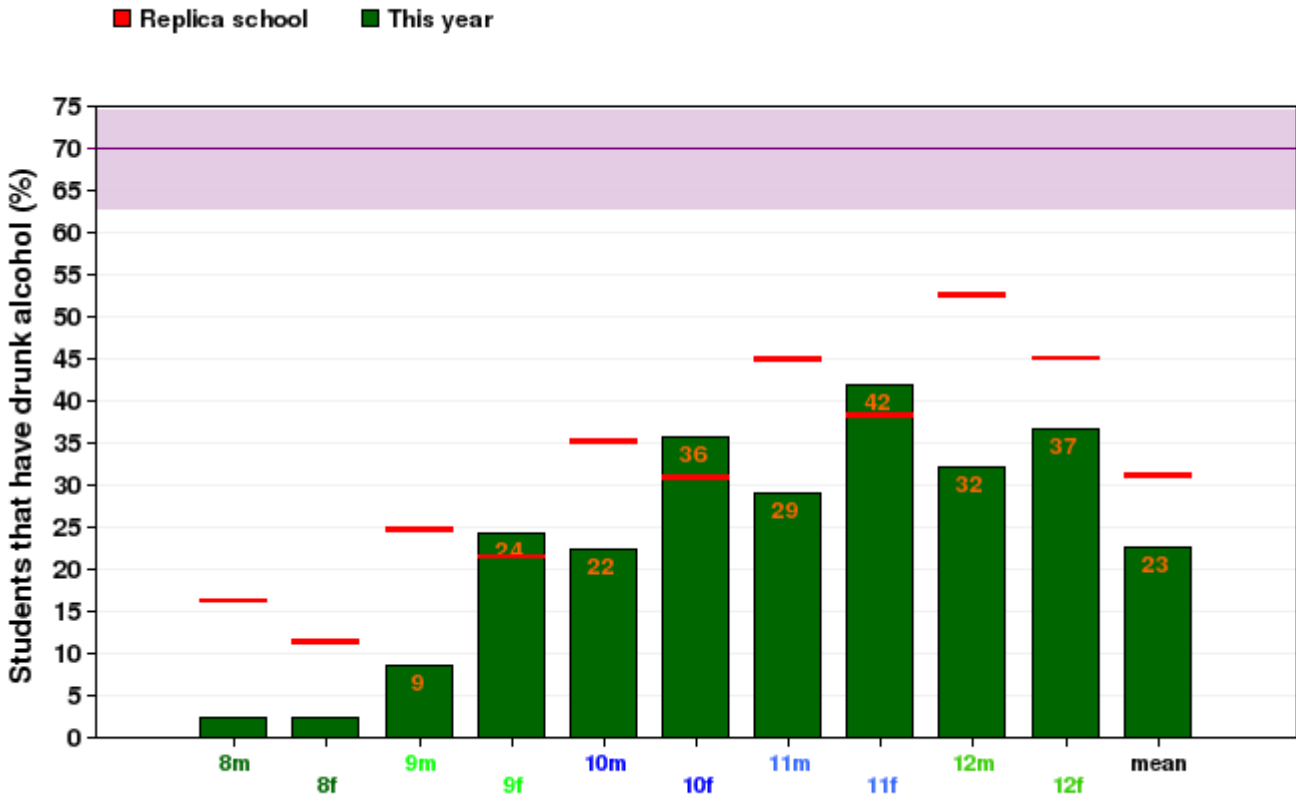


**Porter Creek Secondary School: 2015/2016  
OurSCHOOL Secondary School Survey (3757) (11-04-  
2015)**

*Porter Creek Secondary School (Created On: 11-04-2015)*

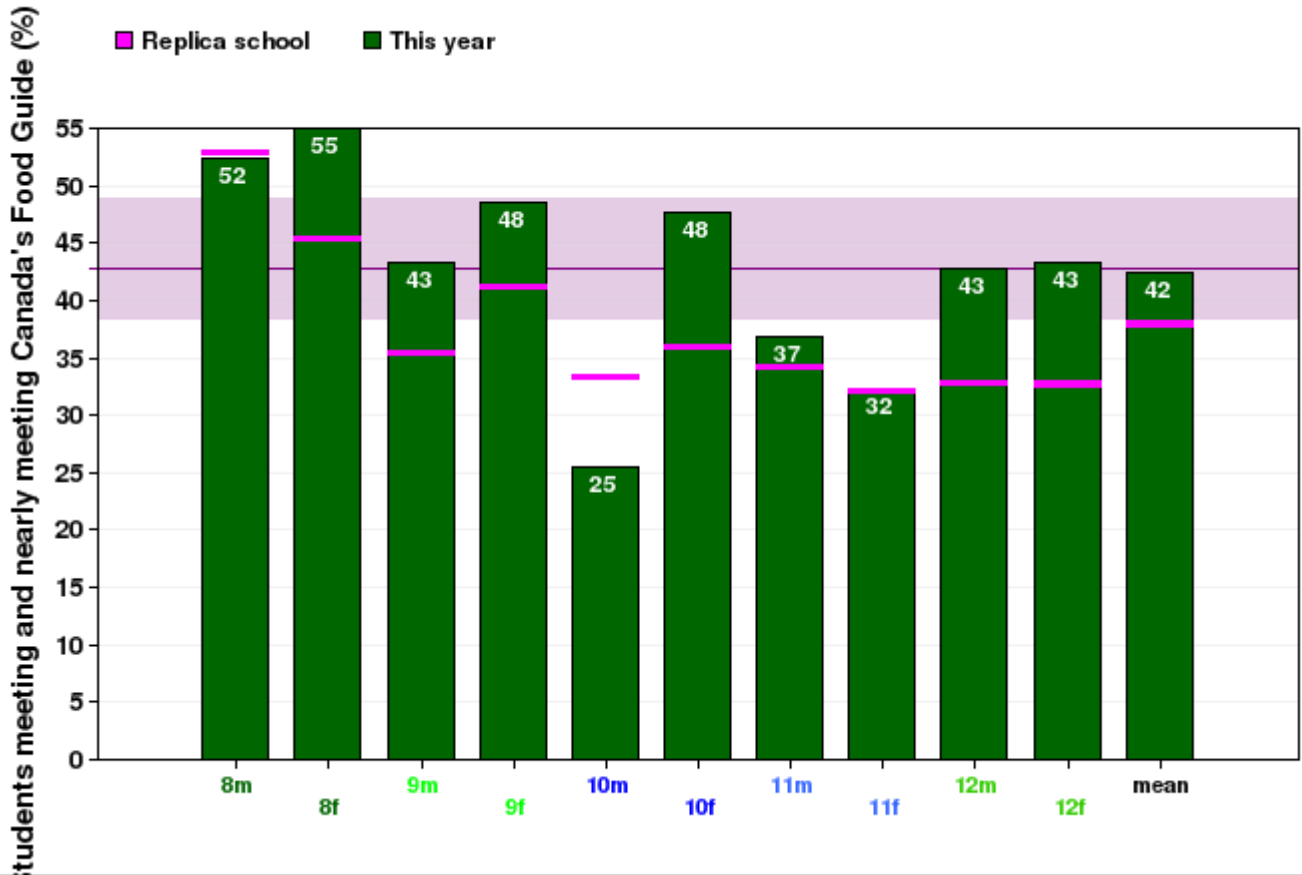
# Alcohol Extended

Porter Creek Secondary School: Students that have drunk alcohol



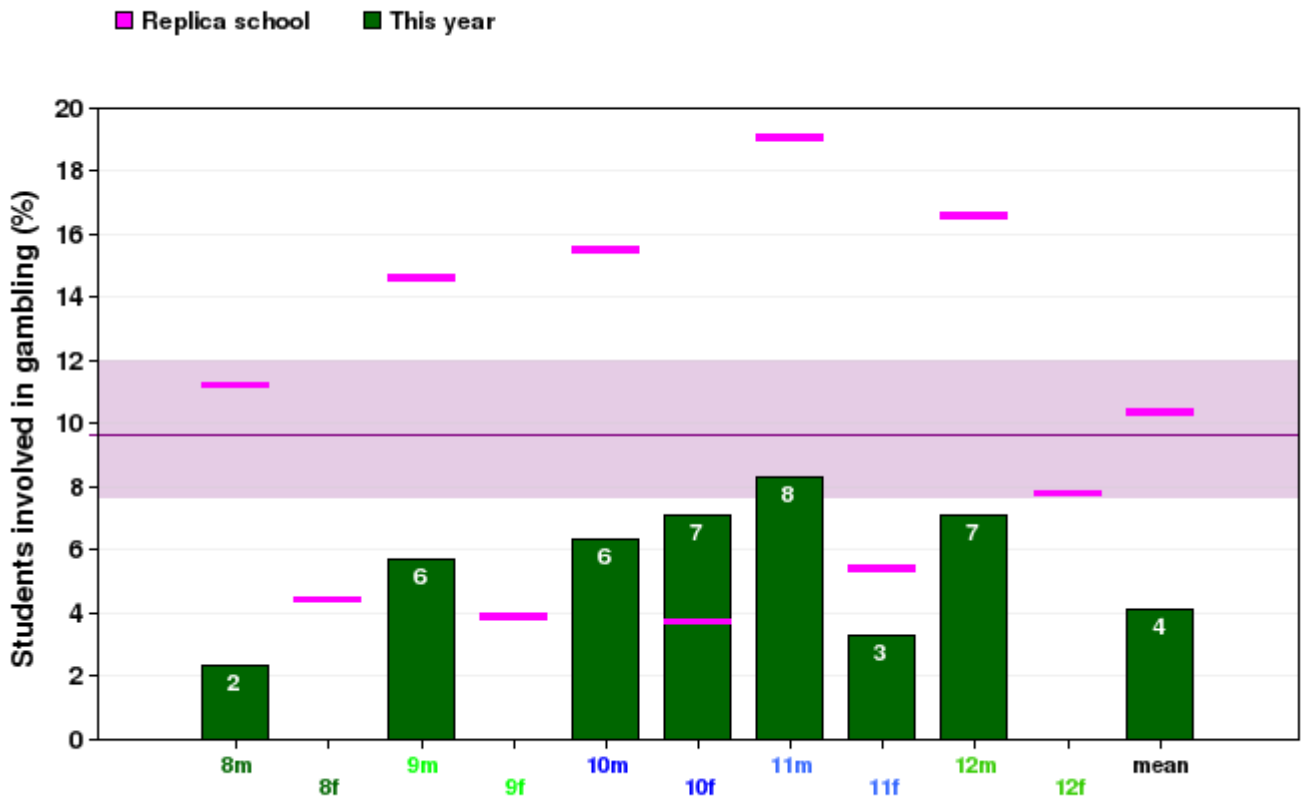
# Canada Food Guidelines

Porter Creek Secondary School: Students meeting and nearly meeting Canada's Food Guide



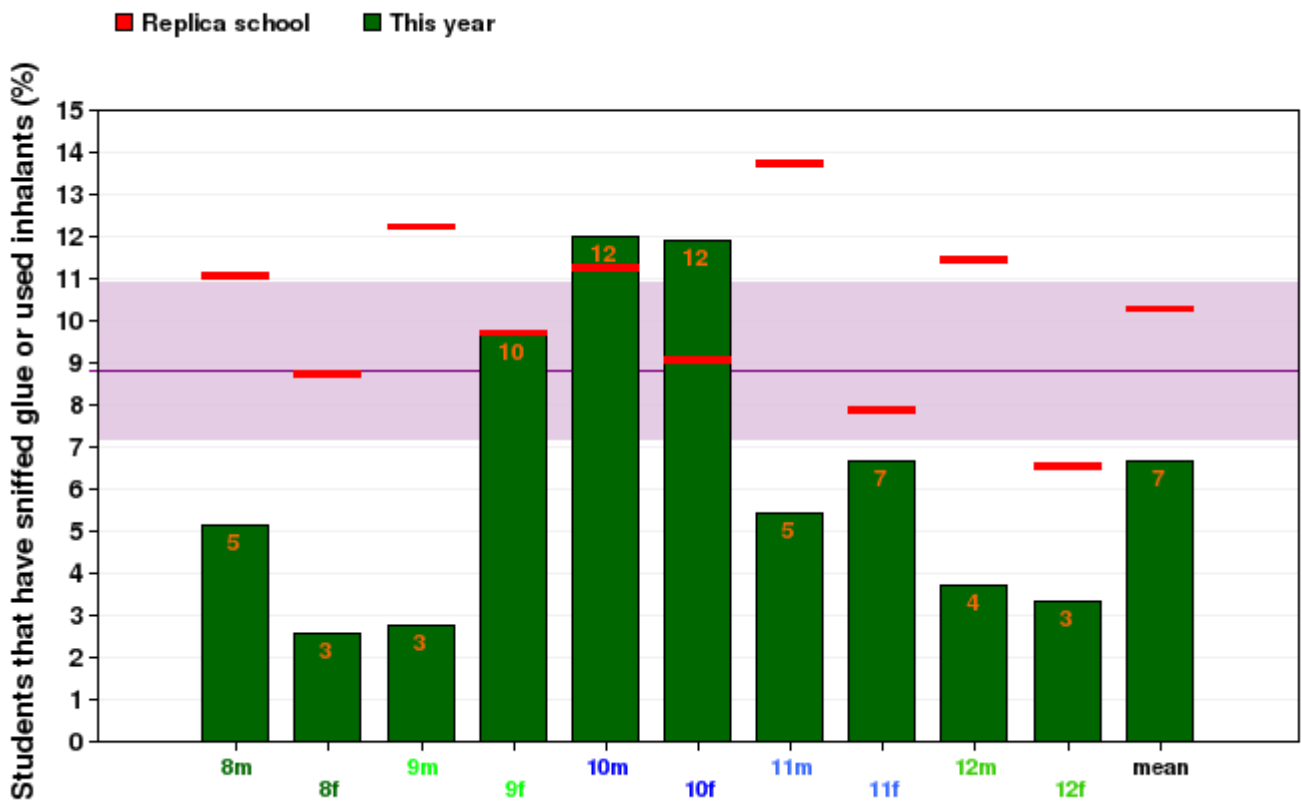
# Gambling Extended

Porter Creek Secondary School: Students involved in gambling

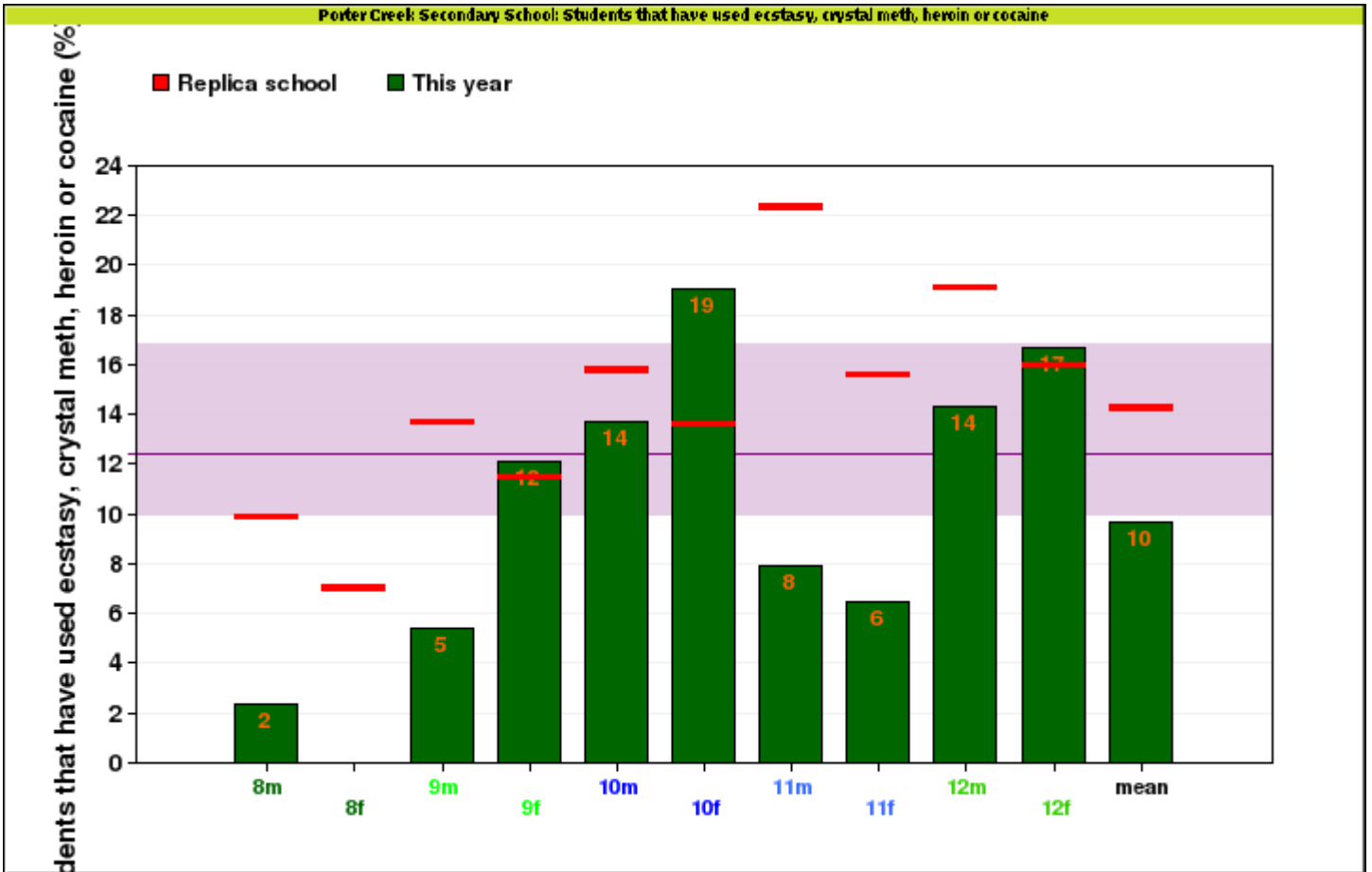


# Has sniffed glue or used inhalants

Porter Creek Secondary School: Students that have sniffed glue or used inhalants

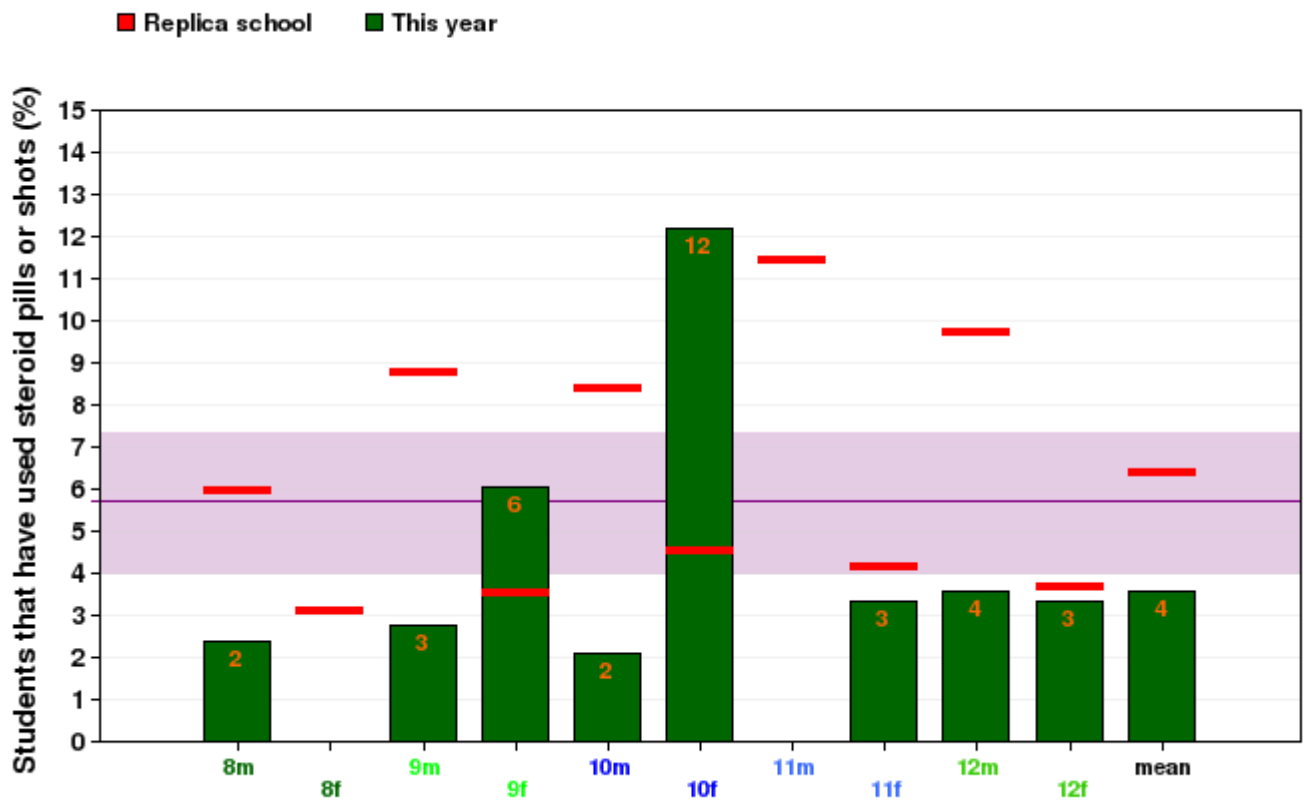


# Has used ecstasy, crystal meth, heroin or cocaine

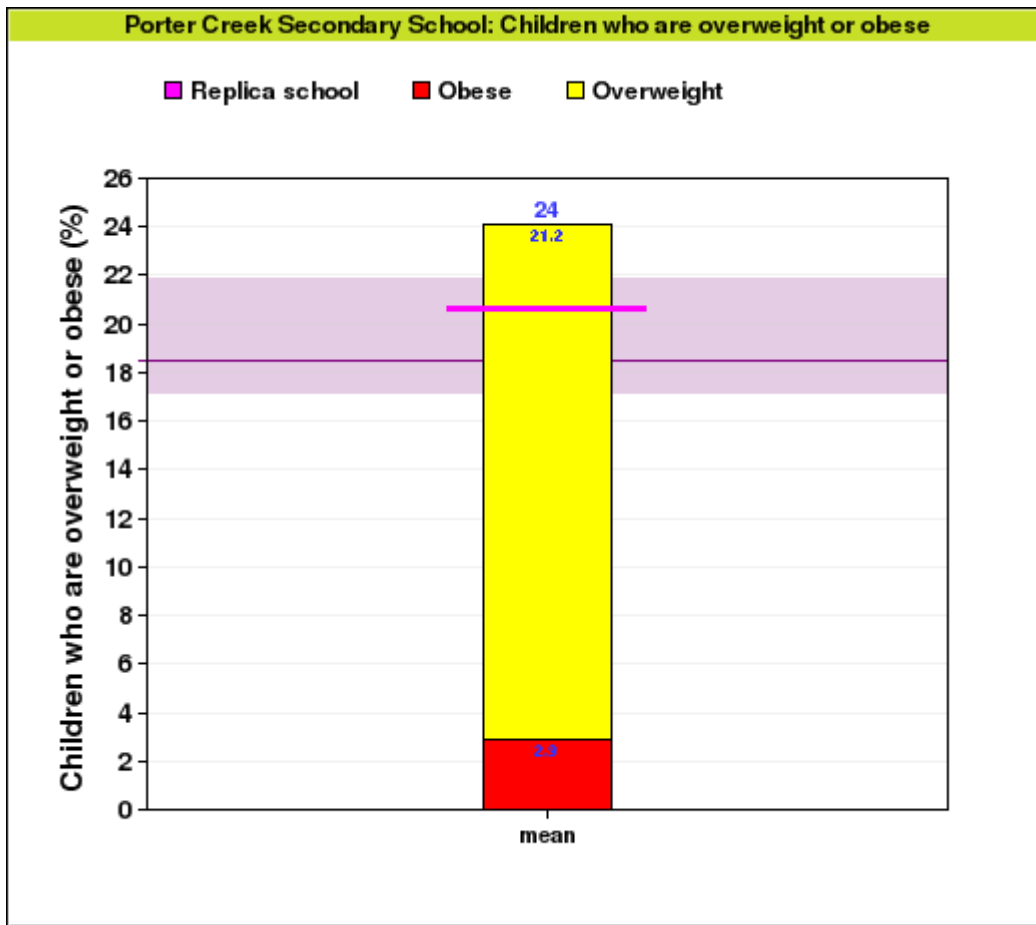


# Has used steroid pills or shots

Porter Creek Secondary School: Students that have used steroid pills or shots



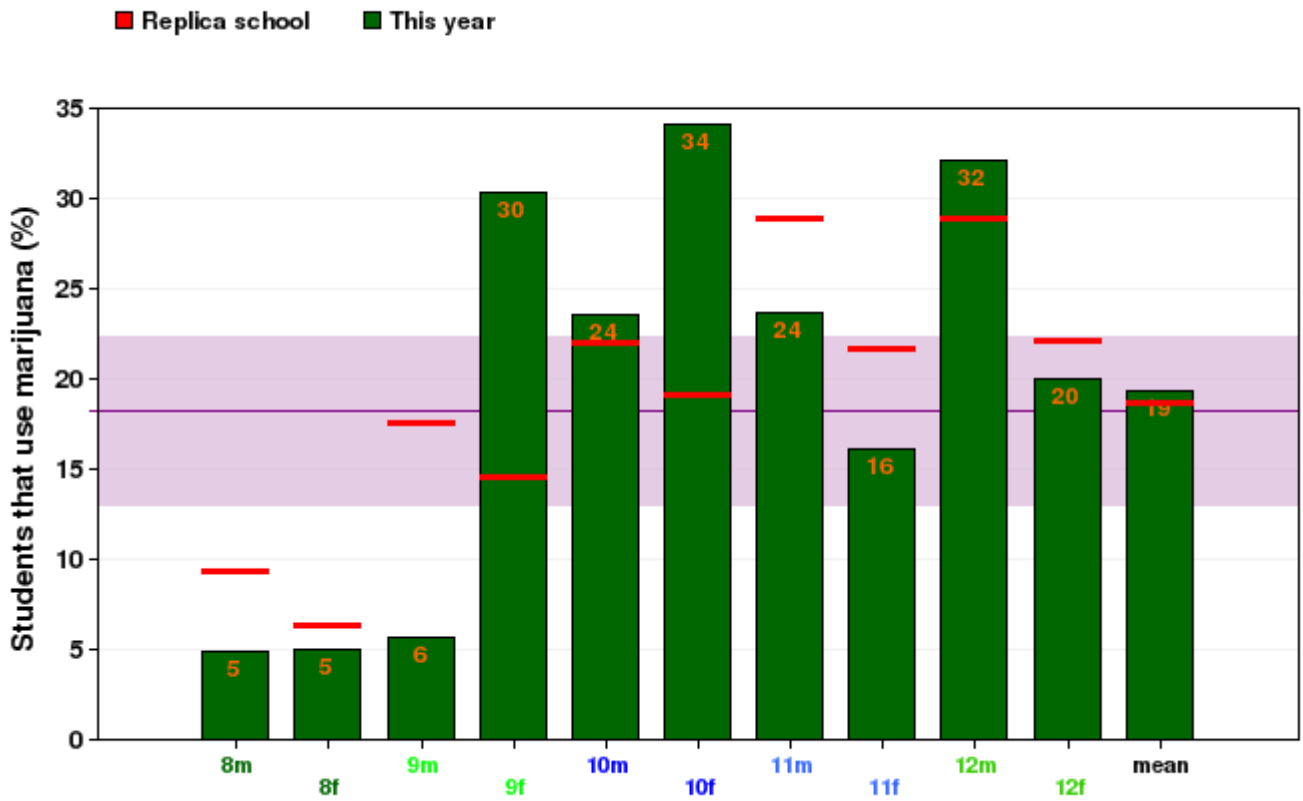
# Healthy Weight





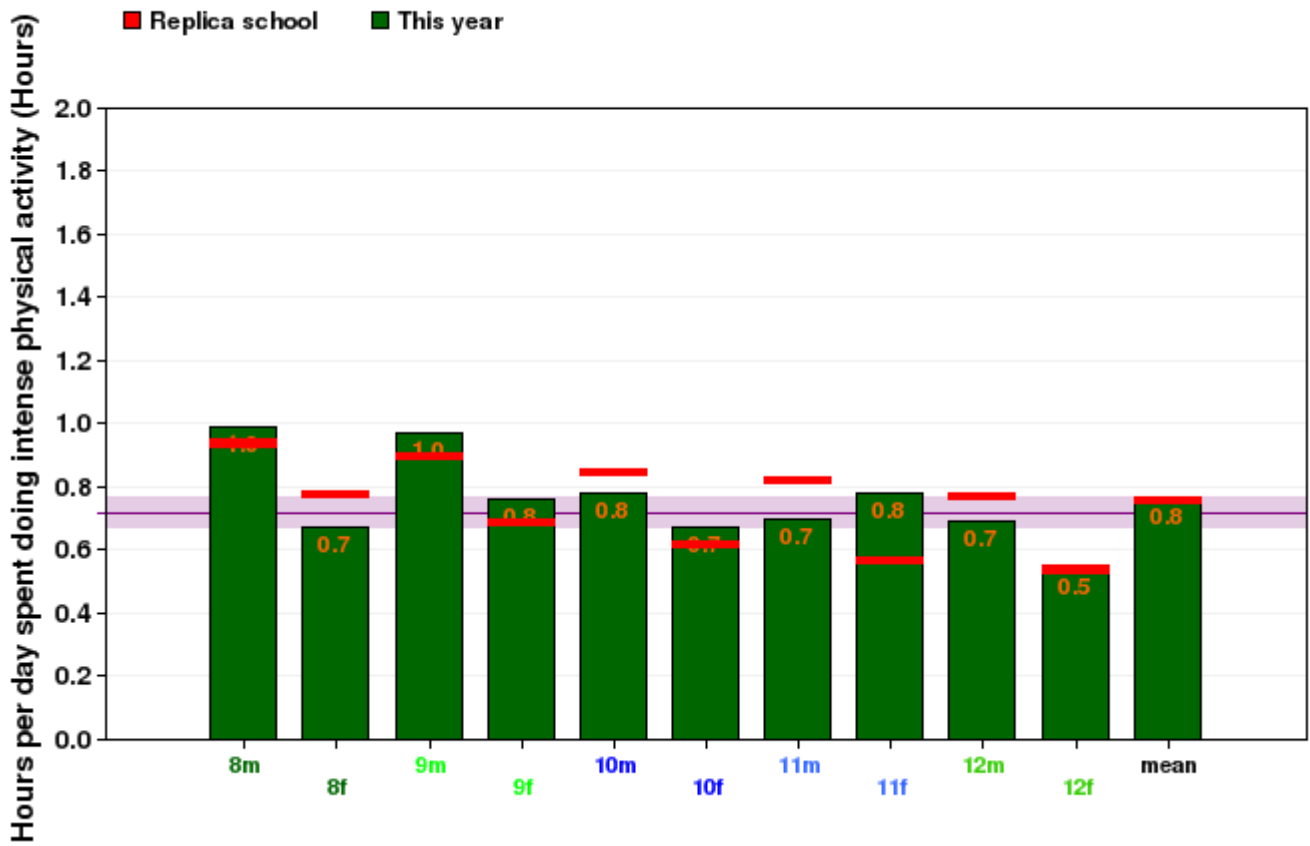
# Marijuana Extended

Porter Creek Secondary School: Students that use marijuana



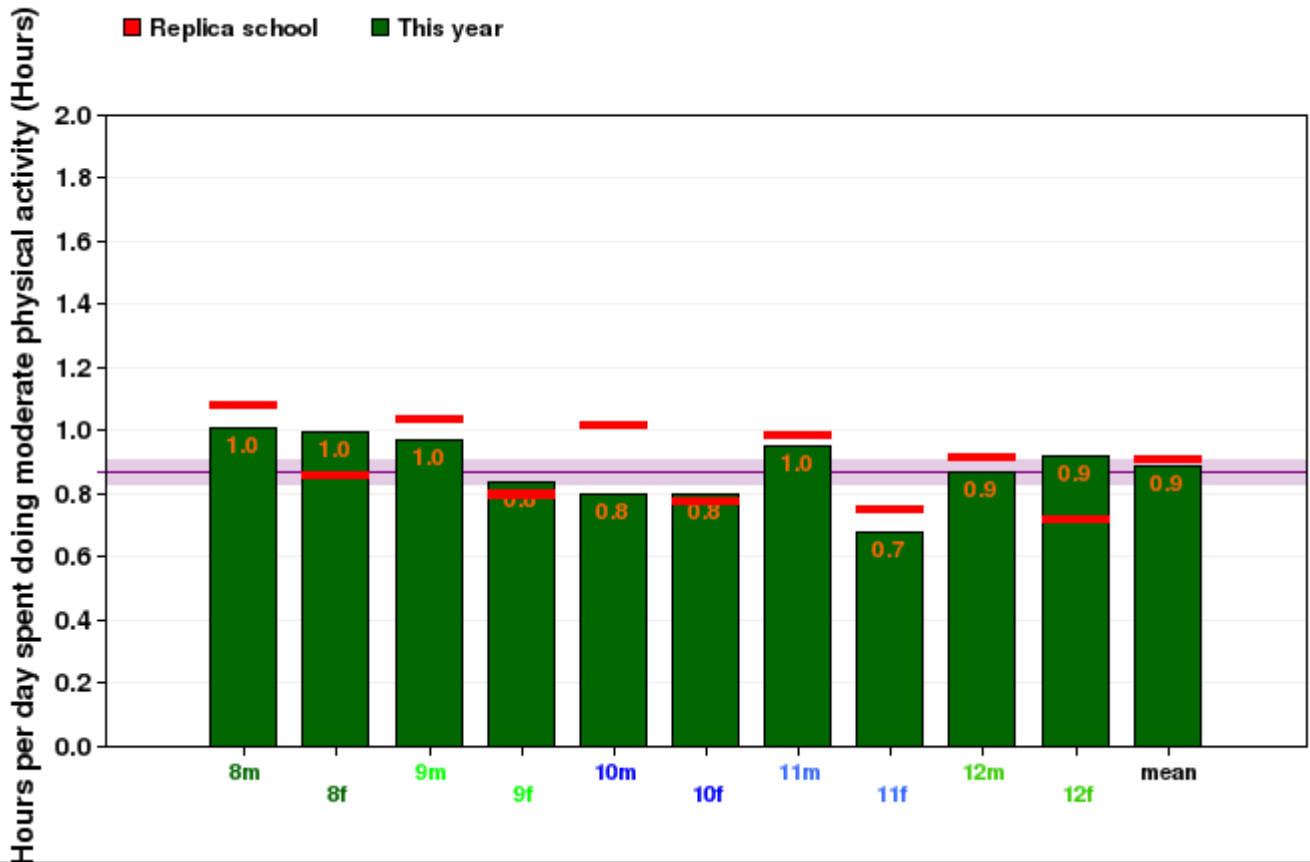
# Physical Activity - intense

Porter Creek Secondary School: Hours per day spent doing intense physical activity



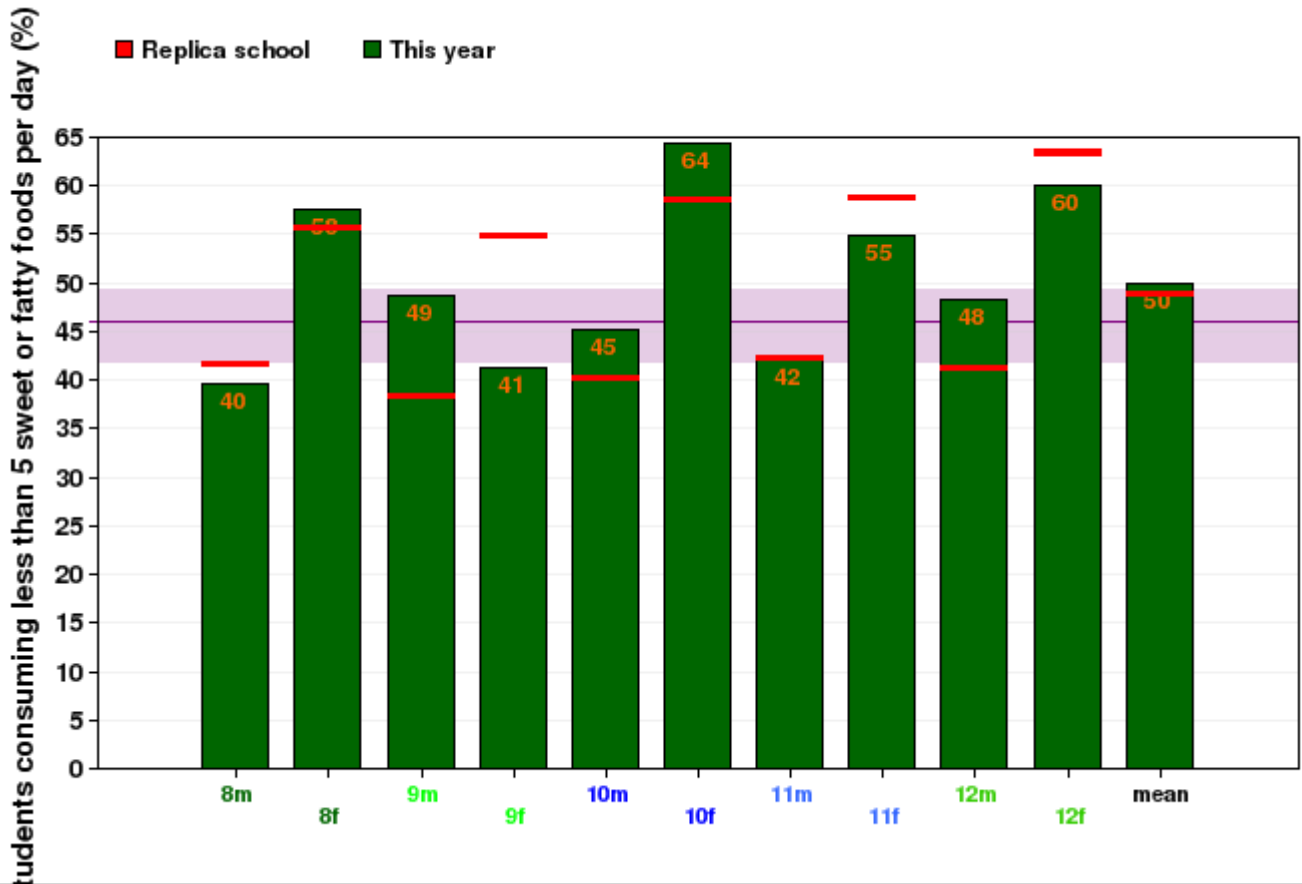
# Physical Activity - moderate

Porter Creek Secondary School: Hours per day spent doing moderate physical activity



# Sweet and Fatty Foods

Porter Creek Secondary School: Students consuming less than 5 sweet or fatty foods per day



# Tobacco Use Extended

Porter Creek Secondary School: Percent Occasional and Regular Tobacco Users

